

How to Connect to the Internet in the MCA dorms

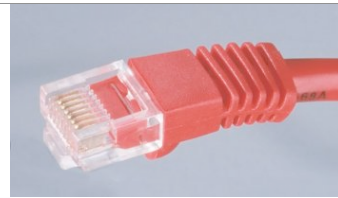
Your computer must have an Ethernet port, and unless it is an antique, it does.

You will also need an Ethernet patch cord, which is not supplied by MCA. You can purchase one at OfficeMax, Radio Shack, Home Depot; they come in different lengths. 10 to 15 ft should do it.

Connect the cord between your computer's Ethernet port and the jack on the wall in the dorm.

The network settings on your computer should be set for Ethernet port and DHCP. This is the default for most PC's and Macs.

Below is information for setting up a Macintosh.



CAT5E ETHERNET PATCH CORD

image – 1

Setting Macintosh Network for DHCP

- Select system Preferences from the Apple menu.
- Click the Network icon.
- If you get the window in image-2, click the Configure button.
- Match the settings shown below, then click "Apply Now".

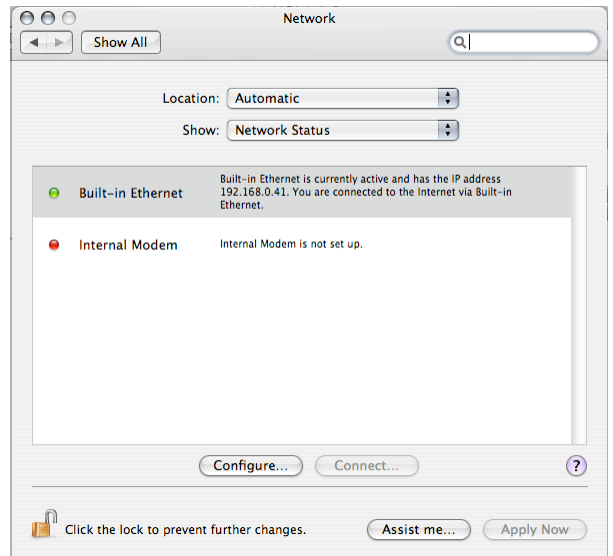
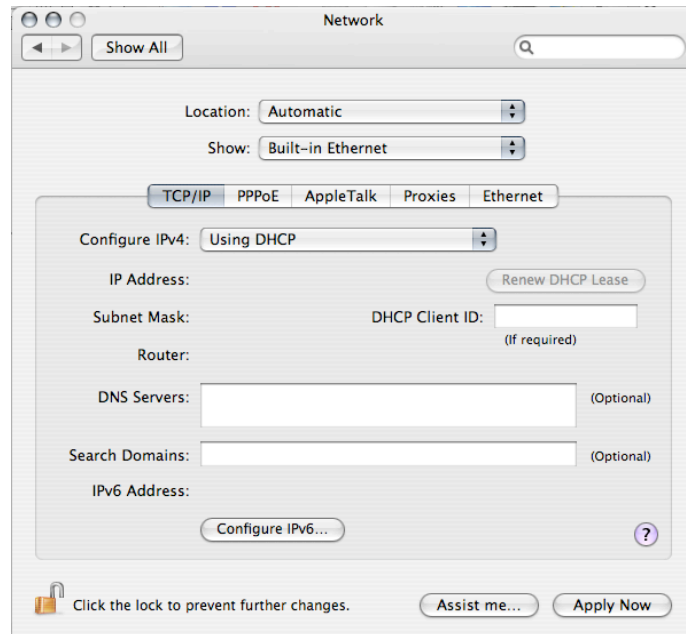


image-2



ATTENTION

Please DO NOT connect a wireless router to the dorm network without first getting permission. It can disable other students' connections. Call Gordon Dover, 272-5173.